

The image is a high-quality architectural rendering of a modern residential property. In the foreground, a swimming pool with clear blue water is partially visible, surrounded by a light-colored stone or concrete deck. To the left, a modern building with a light beige facade and vertical wood slat accents stands on a green lawn. To the right, a wooden pergola structure with a slatted roof extends over a paved walkway. The background features a well-manicured lawn, a row of young trees, and a clear blue sky with scattered white clouds. A semi-transparent white rectangular box is overlaid in the center of the image, containing the text for the project.

# Secobois

L'Art et la Structure

Dossier graphique

*Saint-Fortunat-sur-Eyrieux*



POOLHOUSE

Vue Sud-Ouest



Charpente - Couverture - Menuiserie  
Ossature bois - Extension - Surelevation



POOLHOUSE

Vue Sud-Ouest  
lointaine





POOLHOUSE

Axonométrie Sud

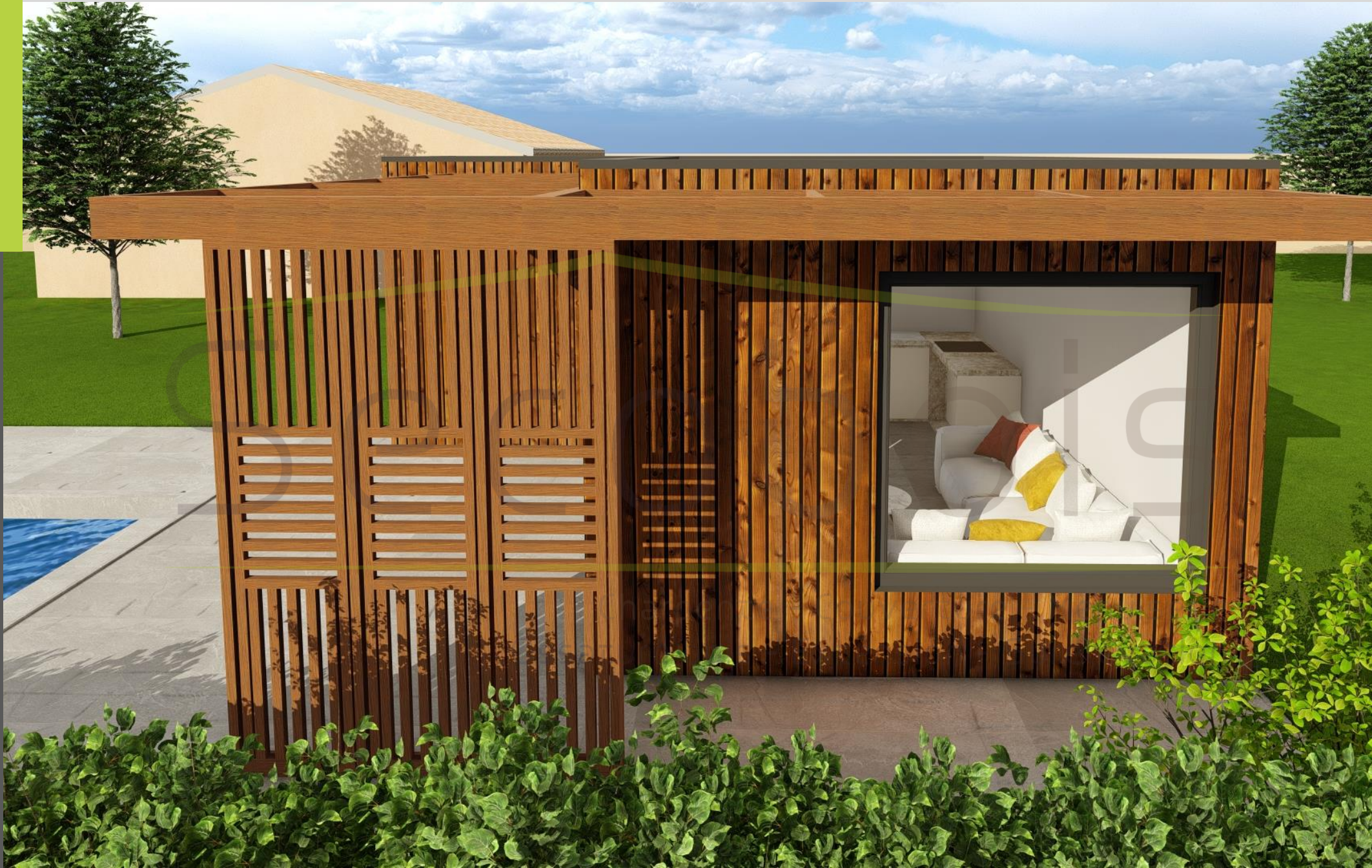


Charpente - Co  
Ossature bois - Extension - Surelevage



POOLHOUSE

Vue Sud-Est





POOLHOUSE

Axonométrie Est





# POOLHOUSE

Vue Nord-Est

Gravures sur panneaux  
Rockpanel, designé et  
usiné par :

Atelier Pivert



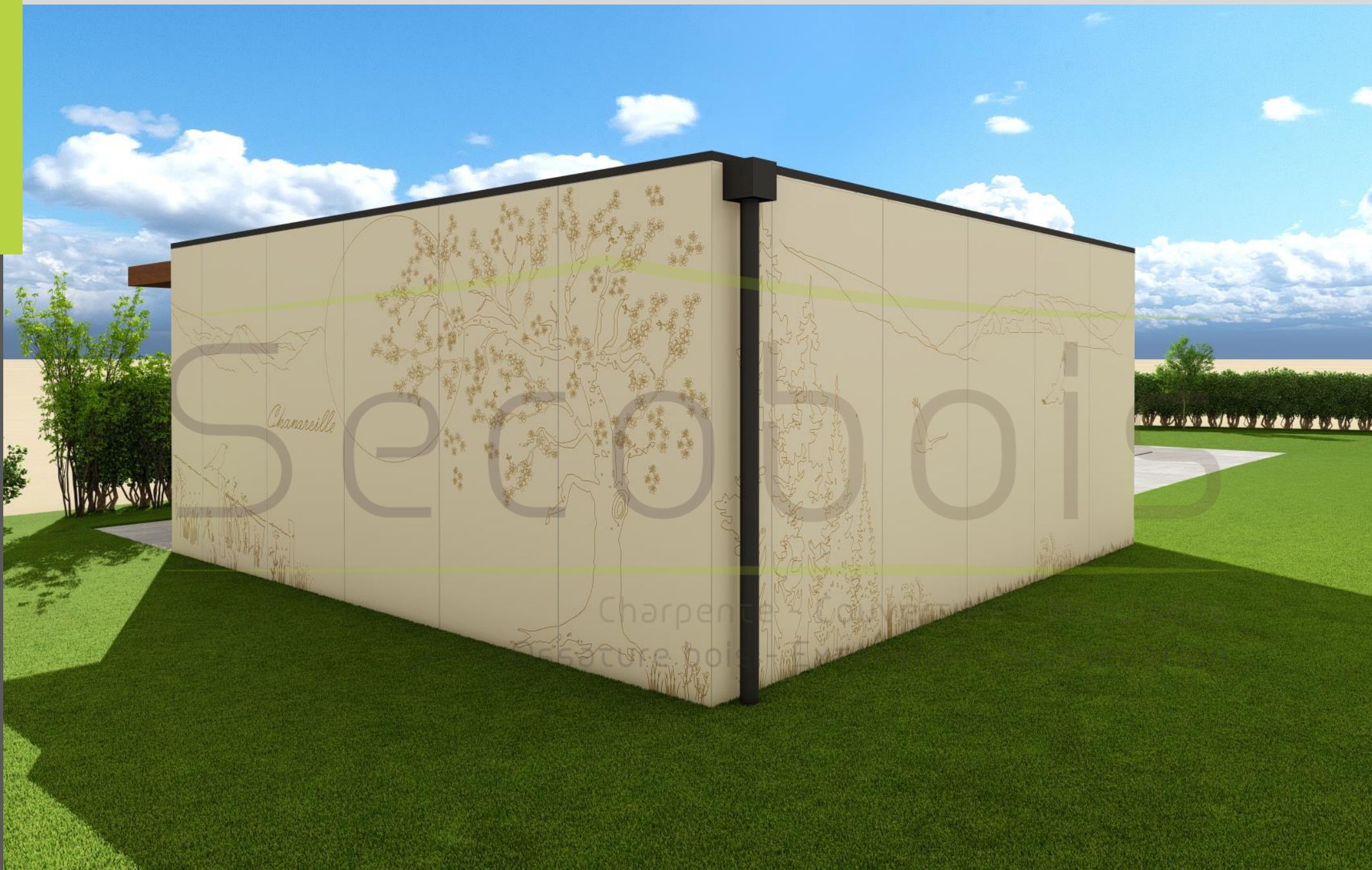


# POOLHOUSE

Axonométrie Nord-  
Ouest

Gravures sur panneaux  
Rockpanel, designé et  
usiné par :

Atelier Pivert





# POOLHOUSE

Vue Nord-Ouest

Gravures sur panneaux  
Rockpanel, designé et  
usiné par :

Atelier Pivert



Charpente - Couverture - Menuiserie  
ossature bois - Extension - Surelevation



POOLHOUSE

Axonométrie Sud



Charpente - Couverture - Menuiserie  
Ossature bois - Extension - Surelevation



# POOLHOUSE

Aménagement

Espace cuisine/salon  
17,80 m<sup>2</sup>

WC/douche  
2,70 m<sup>2</sup>

Local technique  
3,15 m<sup>2</sup>





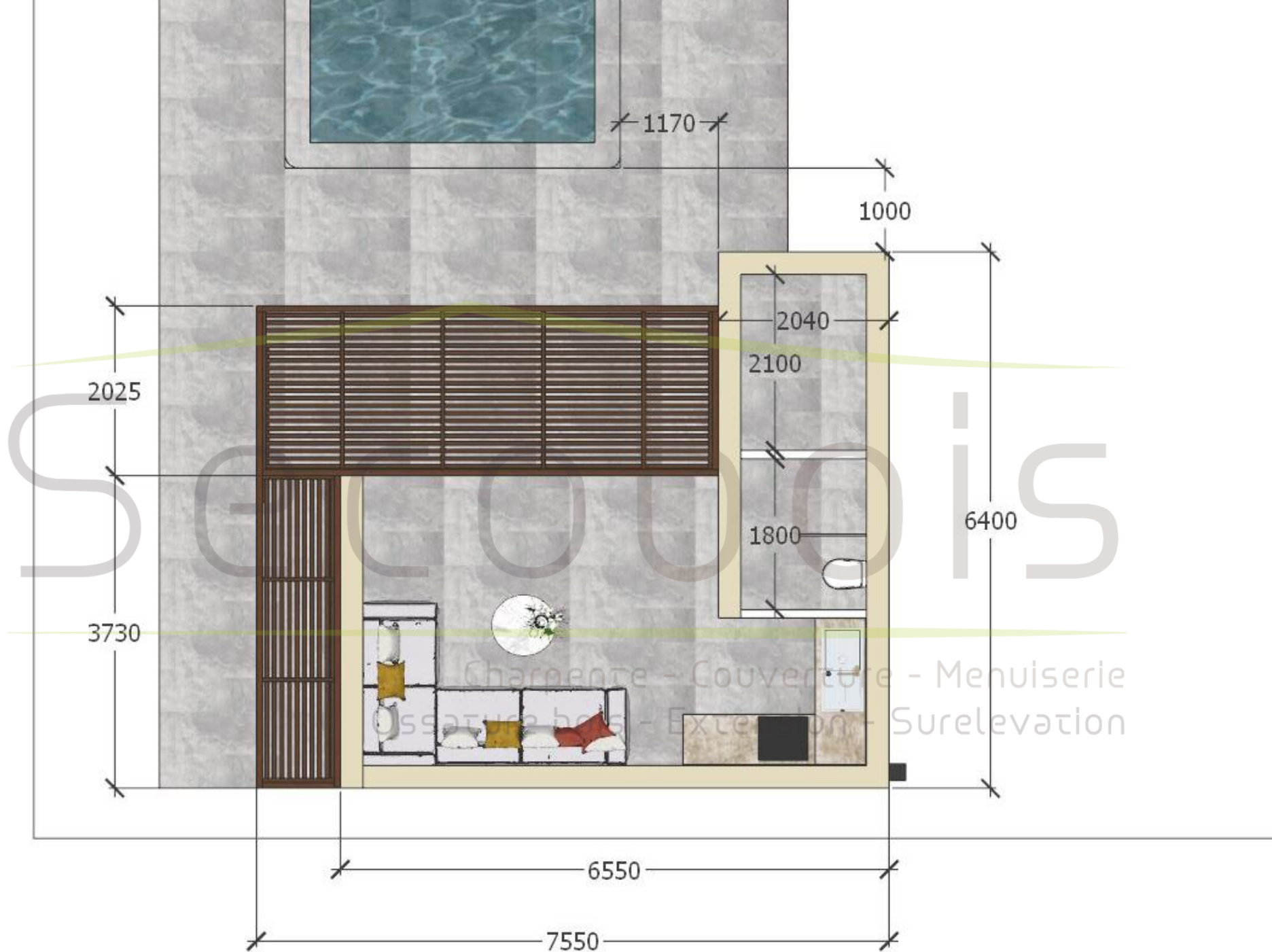
# POOLHOUSE

Aménagement

Espace cuisine/salon  
17,80 m<sup>2</sup>

WC/douche  
2,70 m<sup>2</sup>

Local technique  
3,15 m<sup>2</sup>





# ENSEMBLE



Charpente - Couverture - Menuiserie  
Ossature bois - Extension - Surelevation